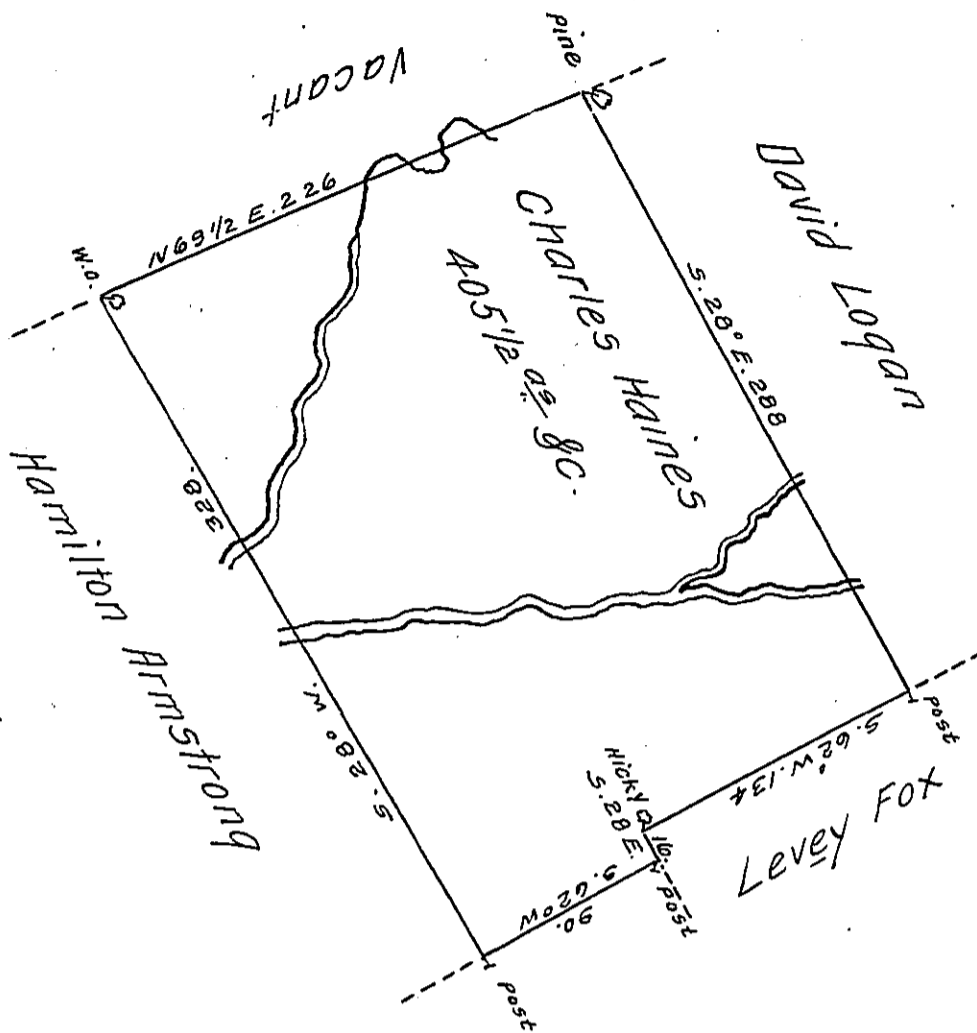


(see Page 63)



A Draught of a tract of land Called— Situate on the North Branch of Nescopeck Creek Joining Land Surv^d for Hamilton Armstrong and others in Stoke Township Luzerne (formerly Northum^d) County. Containing Four Hundred & five Acres 1/2 & Allow^e of Six # Cent for Roads &c. Surveyed for Charles Haines the 20th Day of Nov^r 1784 in Pursuance of a Warrant Dated the 1st Day of July 1784.

by W^m Gray D.S.

To John Lukens Esq^r }
Surv^r Gen^l }

IN TESTIMONY that the above is a copy of the original remaining on file in the Department of Internal Affairs of Pennsylvania, made conformably to an Act of Assembly approved the 16th day of February, 1833, I have hereunto set my Hand and caused the Seal of said Department to be affixed at Harrisburg, this twenty fifth day of November 1910.

Henry Houck
Secretary of Internal Affairs.